

LOOKBOOK

MOSAIC MINI



nomad stitches



The Mosaic Jumper is a celebration of nature at its best! It's inspired by flower meadows that lie dormant in winter only to burst out in colour with the arrival of Spring. With ALL of the colours and fun mosaic graphics, it's the perfect garment to use up yarn in your stash, to experiment and have lots of fun with colour. It's a round yoke pullover with short rows at the back for a perfectly comfortable fit. It has loose sleeves that puff slightly at the bottom, and it is sure to brighten any little one's wardrobe! The pattern follows mosaic chart and comes with complete video tutorials for learning all of the necessary techniques.



nomad stitches



SAMPLE INFORMATION

*Sample size is the 6 yrs worn by a tall 3 year old.
Used around 16 different kinds/colors of yarn
leftover from past projects..*



nomad stitches

YARDAGE REQUIREMENTS

YARN: Fingering weight yarn (size 1, 4 ply, sock yarn)
Approx 480 (620, 730, 890, 1090) (1315, 1515, 1640, 1775) m / 525
(620, 730, 890, 1090) (1315, 1515, 1640, 1775) yds in total divided
into as many colours as desired.



SIZES + MEASUREMENTS

THE FOLLOWING ARE THE FINISHED GARMENT MEASUREMENTS PER SIZE: 6-12 MONTHS (12-18 MONTHS, 2, 4, 6) (8, 10, 12, 14) YRS.

Chest¹: 45.5 (51.5, 57, 63, 68.5) (74.5, 80, 85.5, 91.5) cm / 18 (20¹/₄, 22¹/₂, 24³/₄, 27) (29¹/₄, 31¹/₂, 33³/₄, 36) in
Neck Circumference: 33 (36.5, 38.5, 41.5, 41.5) (45.5, 45.5, 47, 47) cm / 13 (14¹/₂, 15¹/₄, 16¹/₂, 16¹/₂) (18, 18, 18¹/₂, 18¹/₂) in
Upper Arm Circumference: 17 (20, 22, 22, 24) (25, 26, 27, 27.5) cm / 6³/₄ (8, 8¹/₂, 8¹/₂, 9¹/₂) (9³/₄, 10, 10¹/₂, 11) in
Cuff: 18.5 (19.5, 19.5, 20, 20) (21, 21.5, 22, 22) cm / 7¹/₂ (7³/₄, 7³/₄, 8, 8) (8¹/₄, 8¹/₂, 8³/₄, 8³/₄) in
Sleeve Length from underarm²: 17 (21, 23, 29, 31) (35, 37, 38, 39) cm / 6³/₄ (8¹/₄, 9, 11¹/₂, 12¹/₄) (13³/₄, 14¹/₂, 15, 15¹/₂) in
Body Length from underarm²: 13.5 (14.5, 15.5, 17, 21) (25.5, 27.5, 27, 27) cm / 4¹/₂ (5³/₄, 6, 6³/₄, 8¹/₄) (10, 11, 10¹/₂, 10³/₄) in

¹to be worn with 2 - 10 cm / 1 - 4 in of positive ease

²Adjustable to taste.

PATTERN OVERVIEW

MOSAIC MINI

Dylands Culiceni



ABOUT

The Mosaic (yarn) is a celebration of nature at her best! It's inspired by flower meadows that the designer is partial to and is made up of a variety of colors. It's perfect for a baby's wardrobe and has a lot of fun colors that will grow with the baby, and it's sure to be a favorite for the baby's friends.

YK11 Level



Skills & Measurements

This pattern comes in 2 different sizes. The instructions for each size are written out and the color charts have 4-11 months (18 months), 1-2 (24 months), 3-4 (30 months), 5-6 (36 months), 7-8 (42 months), 9-10 (48 months), 11-12 (54 months), 13-14 (60 months), 15-16 (66 months), 17-18 (72 months), 19-20 (78 months), 21-22 (84 months), 23-24 (90 months), 25-26 (96 months), 27-28 (102 months), 29-30 (108 months), 31-32 (114 months), 33-34 (120 months), 35-36 (126 months), 37-38 (132 months), 39-40 (138 months), 41-42 (144 months), 43-44 (150 months), 45-46 (156 months), 47-48 (162 months), 49-50 (168 months), 51-52 (174 months), 53-54 (180 months), 55-56 (186 months), 57-58 (192 months), 59-60 (198 months), 61-62 (204 months), 63-64 (210 months), 65-66 (216 months), 67-68 (222 months), 69-70 (228 months), 71-72 (234 months), 73-74 (240 months), 75-76 (246 months), 77-78 (252 months), 79-80 (258 months), 81-82 (264 months), 83-84 (270 months), 85-86 (276 months), 87-88 (282 months), 89-90 (288 months), 91-92 (294 months), 93-94 (300 months), 95-96 (306 months), 97-98 (312 months), 99-100 (318 months), 101-102 (324 months), 103-104 (330 months), 105-106 (336 months), 107-108 (342 months), 109-110 (348 months), 111-112 (354 months), 113-114 (360 months), 115-116 (366 months), 117-118 (372 months), 119-120 (378 months), 121-122 (384 months), 123-124 (390 months), 125-126 (396 months), 127-128 (402 months), 129-130 (408 months), 131-132 (414 months), 133-134 (420 months), 135-136 (426 months), 137-138 (432 months), 139-140 (438 months), 141-142 (444 months), 143-144 (450 months), 145-146 (456 months), 147-148 (462 months), 149-150 (468 months), 151-152 (474 months), 153-154 (480 months), 155-156 (486 months), 157-158 (492 months), 159-160 (498 months), 161-162 (504 months), 163-164 (510 months), 165-166 (516 months), 167-168 (522 months), 169-170 (528 months), 171-172 (534 months), 173-174 (540 months), 175-176 (546 months), 177-178 (552 months), 179-180 (558 months), 181-182 (564 months), 183-184 (570 months), 185-186 (576 months), 187-188 (582 months), 189-190 (588 months), 191-192 (594 months), 193-194 (600 months), 195-196 (606 months), 197-198 (612 months), 199-200 (618 months), 201-202 (624 months), 203-204 (630 months), 205-206 (636 months), 207-208 (642 months), 209-210 (648 months), 211-212 (654 months), 213-214 (660 months), 215-216 (666 months), 217-218 (672 months), 219-220 (678 months), 221-222 (684 months), 223-224 (690 months), 225-226 (696 months), 227-228 (702 months), 229-230 (708 months), 231-232 (714 months), 233-234 (720 months), 235-236 (726 months), 237-238 (732 months), 239-240 (738 months), 241-242 (744 months), 243-244 (750 months), 245-246 (756 months), 247-248 (762 months), 249-250 (768 months), 251-252 (774 months), 253-254 (780 months), 255-256 (786 months), 257-258 (792 months), 259-260 (798 months), 261-262 (804 months), 263-264 (810 months), 265-266 (816 months), 267-268 (822 months), 269-270 (828 months), 271-272 (834 months), 273-274 (840 months), 275-276 (846 months), 277-278 (852 months), 279-280 (858 months), 281-282 (864 months), 283-284 (870 months), 285-286 (876 months), 287-288 (882 months), 289-290 (888 months), 291-292 (894 months), 293-294 (900 months), 295-296 (906 months), 297-298 (912 months), 299-300 (918 months), 301-302 (924 months), 303-304 (930 months), 305-306 (936 months), 307-308 (942 months), 309-310 (948 months), 311-312 (954 months), 313-314 (960 months), 315-316 (966 months), 317-318 (972 months), 319-320 (978 months), 321-322 (984 months), 323-324 (990 months), 325-326 (996 months), 327-328 (1002 months), 329-330 (1008 months), 331-332 (1014 months), 333-334 (1020 months), 335-336 (1026 months), 337-338 (1032 months), 339-340 (1038 months), 341-342 (1044 months), 343-344 (1050 months), 345-346 (1056 months), 347-348 (1062 months), 349-350 (1068 months), 351-352 (1074 months), 353-354 (1080 months), 355-356 (1086 months), 357-358 (1092 months), 359-360 (1098 months), 361-362 (1104 months), 363-364 (1110 months), 365-366 (1116 months), 367-368 (1122 months), 369-370 (1128 months), 371-372 (1134 months), 373-374 (1140 months), 375-376 (1146 months), 377-378 (1152 months), 379-380 (1158 months), 381-382 (1164 months), 383-384 (1170 months), 385-386 (1176 months), 387-388 (1182 months), 389-390 (1188 months), 391-392 (1194 months), 393-394 (1200 months), 395-396 (1206 months), 397-398 (1212 months), 399-400 (1218 months), 401-402 (1224 months), 403-404 (1230 months), 405-406 (1236 months), 407-408 (1242 months), 409-410 (1248 months), 411-412 (1254 months), 413-414 (1260 months), 415-416 (1266 months), 417-418 (1272 months), 419-420 (1278 months), 421-422 (1284 months), 423-424 (1290 months), 425-426 (1296 months), 427-428 (1302 months), 429-430 (1308 months), 431-432 (1314 months), 433-434 (1320 months), 435-436 (1326 months), 437-438 (1332 months), 439-440 (1338 months), 441-442 (1344 months), 443-444 (1350 months), 445-446 (1356 months), 447-448 (1362 months), 449-450 (1368 months), 451-452 (1374 months), 453-454 (1380 months), 455-456 (1386 months), 457-458 (1392 months), 459-460 (1398 months), 461-462 (1404 months), 463-464 (1410 months), 465-466 (1416 months), 467-468 (1422 months), 469-470 (1428 months), 471-472 (1434 months), 473-474 (1440 months), 475-476 (1446 months), 477-478 (1452 months), 479-480 (1458 months), 481-482 (1464 months), 483-484 (1470 months), 485-486 (1476 months), 487-488 (1482 months), 489-490 (1488 months), 491-492 (1494 months), 493-494 (1500 months), 495-496 (1506 months), 497-498 (1512 months), 499-500 (1518 months), 501-502 (1524 months), 503-504 (1530 months), 505-506 (1536 months), 507-508 (1542 months), 509-510 (1548 months), 511-512 (1554 months), 513-514 (1560 months), 515-516 (1566 months), 517-518 (1572 months), 519-520 (1578 months), 521-522 (1584 months), 523-524 (1590 months), 525-526 (1596 months), 527-528 (1602 months), 529-530 (1608 months), 531-532 (1614 months), 533-534 (1620 months), 535-536 (1626 months), 537-538 (1632 months), 539-540 (1638 months), 541-542 (1644 months), 543-544 (1650 months), 545-546 (1656 months), 547-548 (1662 months), 549-550 (1668 months), 551-552 (1674 months), 553-554 (1680 months), 555-556 (1686 months), 557-558 (1692 months), 559-560 (1698 months), 561-562 (1704 months), 563-564 (1710 months), 565-566 (1716 months), 567-568 (1722 months), 569-570 (1728 months), 571-572 (1734 months), 573-574 (1740 months), 575-576 (1746 months), 577-578 (1752 months), 579-580 (1758 months), 581-582 (1764 months), 583-584 (1770 months), 585-586 (1776 months), 587-588 (1782 months), 589-590 (1788 months), 591-592 (1794 months), 593-594 (1800 months), 595-596 (1806 months), 597-598 (1812 months), 599-600 (1818 months), 601-602 (1824 months), 603-604 (1830 months), 605-606 (1836 months), 607-608 (1842 months), 609-610 (1848 months), 611-612 (1854 months), 613-614 (1860 months), 615-616 (1866 months), 617-618 (1872 months), 619-620 (1878 months), 621-622 (1884 months), 623-624 (1890 months), 625-626 (1896 months), 627-628 (1902 months), 629-630 (1908 months), 631-632 (1914 months), 633-634 (1920 months), 635-636 (1926 months), 637-638 (1932 months), 639-640 (1938 months), 641-642 (1944 months), 643-644 (1950 months), 645-646 (1956 months), 647-648 (1962 months), 649-650 (1968 months), 651-652 (1974 months), 653-654 (1980 months), 655-656 (1986 months), 657-658 (1992 months), 659-660 (1998 months), 661-662 (2004 months), 663-664 (2010 months), 665-666 (2016 months), 667-668 (2022 months), 669-670 (2028 months), 671-672 (2034 months), 673-674 (2040 months), 675-676 (2046 months), 677-678 (2052 months), 679-680 (2058 months), 681-682 (2064 months), 683-684 (2070 months), 685-686 (2076 months), 687-688 (2082 months), 689-690 (2088 months), 691-692 (2094 months), 693-694 (2100 months), 695-696 (2106 months), 697-698 (2112 months), 699-700 (2118 months), 701-702 (2124 months), 703-704 (2130 months), 705-706 (2136 months), 707-708 (2142 months), 709-710 (2148 months), 711-712 (2154 months), 713-714 (2160 months), 715-716 (2166 months), 717-718 (2172 months), 719-720 (2178 months), 721-722 (2184 months), 723-724 (2190 months), 725-726 (2196 months), 727-728 (2202 months), 729-730 (2208 months), 731-732 (2214 months), 733-734 (2220 months), 735-736 (2226 months), 737-738 (2232 months), 739-740 (2238 months), 741-742 (2244 months), 743-744 (2250 months), 745-746 (2256 months), 747-748 (2262 months), 749-750 (2268 months), 751-752 (2274 months), 753-754 (2280 months), 755-756 (2286 months), 757-758 (2292 months), 759-760 (2298 months), 761-762 (2304 months), 763-764 (2310 months), 765-766 (2316 months), 767-768 (2322 months), 769-770 (2328 months), 771-772 (2334 months), 773-774 (2340 months), 775-776 (2346 months), 777-778 (2352 months), 779-780 (2358 months), 781-782 (2364 months), 783-784 (2370 months), 785-786 (2376 months), 787-788 (2382 months), 789-790 (2388 months), 791-792 (2394 months), 793-794 (2400 months), 795-796 (2406 months), 797-798 (2412 months), 799-800 (2418 months), 801-802 (2424 months), 803-804 (2430 months), 805-806 (2436 months), 807-808 (2442 months), 809-810 (2448 months), 811-812 (2454 months), 813-814 (2460 months), 815-816 (2466 months), 817-818 (2472 months), 819-820 (2478 months), 821-822 (2484 months), 823-824 (2490 months), 825-826 (2496 months), 827-828 (2502 months), 829-830 (2508 months), 831-832 (2514 months), 833-834 (2520 months), 835-836 (2526 months), 837-838 (2532 months), 839-840 (2538 months), 841-842 (2544 months), 843-844 (2550 months), 845-846 (2556 months), 847-848 (2562 months), 849-850 (2568 months), 851-852 (2574 months), 853-854 (2580 months), 855-856 (2586 months), 857-858 (2592 months), 859-860 (2598 months), 861-862 (2604 months), 863-864 (2610 months), 865-866 (2616 months), 867-868 (2622 months), 869-870 (2628 months), 871-872 (2634 months), 873-874 (2640 months), 875-876 (2646 months), 877-878 (2652 months), 879-880 (2658 months), 881-882 (2664 months), 883-884 (2670 months), 885-886 (2676 months), 887-888 (2682 months), 889-890 (2688 months), 891-892 (2694 months), 893-894 (2700 months), 895-896 (2706 months), 897-898 (2712 months), 899-900 (2718 months), 901-902 (2724 months), 903-904 (2730 months), 905-906 (2736 months), 907-908 (2742 months), 909-910 (2748 months), 911-912 (2754 months), 913-914 (2760 months), 915-916 (2766 months), 917-918 (2772 months), 919-920 (2778 months), 921-922 (2784 months), 923-924 (2790 months), 925-926 (2796 months), 927-928 (2802 months), 929-930 (2808 months), 931-932 (2814 months), 933-934 (2820 months), 935-936 (2826 months), 937-938 (2832 months), 939-940 (2838 months), 941-942 (2844 months), 943-944 (2850 months), 945-946 (2856 months), 947-948 (2862 months), 949-950 (2868 months), 951-952 (2874 months), 953-954 (2880 months), 955-956 (2886 months), 957-958 (2892 months), 959-960 (2898 months), 961-962 (2904 months), 963-964 (2910 months), 965-966 (2916 months), 967-968 (2922 months), 969-970 (2928 months), 971-972 (2934 months), 973-974 (2940 months), 975-976 (2946 months), 977-978 (2952 months), 979-980 (2958 months), 981-982 (2964 months), 983-984 (2970 months), 985-986 (2976 months), 987-988 (2982 months), 989-990 (2988 months), 991-992 (2994 months), 993-994 (3000 months), 995-996 (3006 months), 997-998 (3012 months), 999-1000 (3018 months), 1001-1002 (3024 months), 1003-1004 (3030 months), 1005-1006 (3036 months), 1007-1008 (3042 months), 1009-1010 (3048 months), 1011-1012 (3054 months), 1013-1014 (3060 months), 1015-1016 (3066 months), 1017-1018 (3072 months), 1019-1020 (3078 months), 1021-1022 (3084 months), 1023-1024 (3090 months), 1025-1026 (3096 months), 1027-1028 (3102 months), 1029-1030 (3108 months), 1031-1032 (3114 months), 1033-1034 (3120 months), 1035-1036 (3126 months), 1037-1038 (3132 months), 1039-1040 (3138 months), 1041-1042 (3144 months), 1043-1044 (3150 months), 1045-1046 (3156 months), 1047-1048 (3162 months), 1049-1050 (3168 months), 1051-1052 (3174 months), 1053-1054 (3180 months), 1055-1056 (3186 months), 1057-1058 (3192 months), 1059-1060 (3198 months), 1061-1062 (3204 months), 1063-1064 (3210 months), 1065-1066 (3216 months), 1067-1068 (3222 months), 1069-1070 (3228 months), 1071-1072 (3234 months), 1073-1074 (3240 months), 1075-1076 (3246 months), 1077-1078 (3252 months), 1079-1080 (3258 months), 1081-1082 (3264 months), 1083-1084 (3270 months), 1085-1086 (3276 months), 1087-1088 (3282 months), 1089-1090 (3288 months), 1091-1092 (3294 months), 1093-1094 (3300 months), 1095-1096 (3306 months), 1097-1098 (3312 months), 1099-1100 (3318 months), 1101-1102 (3324 months), 1103-1104 (3330 months), 1105-1106 (3336 months), 1107-1108 (3342 months), 1109-1110 (3348 months), 1111-1112 (3354 months), 1113-1114 (3360 months), 1115-1116 (3366 months), 1117-1118 (3372 months), 1119-1120 (3378 months), 1121-1122 (3384 months), 1123-1124 (3390 months), 1125-1126 (3396 months), 1127-1128 (3402 months), 1129-1130 (3408 months), 1131-1132 (3414 months), 1133-1134 (3420 months), 1135-1136 (3426 months), 1137-1138 (3432 months), 1139-1140 (3438 months), 1141-1142 (3444 months), 1143-1144 (3450 months), 1145-1146 (3456 months), 1147-1148 (3462 months), 1149-1150 (3468 months), 1151-1152 (3474 months), 1153-1154 (3480 months), 1155-1156 (3486 months), 1157-1158 (3492 months), 1159-1160 (3498 months), 1161-1162 (3504 months), 1163-1164 (3510 months), 1165-1166 (3516 months), 1167-1168 (3522 months), 1169-1170 (3528 months), 1171-1172 (3534 months), 1173-1174 (3540 months), 1175-1176 (3546 months), 1177-1178 (3552 months), 1179-1180 (3558 months), 1181-1182 (3564 months), 1183-1184 (3570 months), 1185-1186 (3576 months), 1187-1188 (3582 months), 1189-1190 (3588 months), 1191-1192 (3594 months), 1193-1194 (3600 months), 1195-1196 (3606 months), 1197-1198 (3612 months), 1199-1200 (3618 months), 1201-1202 (3624 months), 1203-1204 (3630 months), 1205-1206 (3636 months), 1207-1208 (3642 months), 1209-1210 (3648 months), 1211-1212 (3654 months), 1213-1214 (3660 months), 1215-1216 (3666 months), 1217-1218 (3672 months), 1219-1220 (3678 months), 1221-1222 (3684 months), 1223-1224 (3690 months), 1225-1226 (3696 months), 1227-1228 (3702 months), 1229-1230 (3708 months), 1231-1232 (3714 months), 1233-1234 (3720 months), 1235-1236 (3726 months), 1237-1238 (3732 months), 1239-1240 (3738 months), 1241-1242 (3744 months), 1243-1244 (3750 months), 1245-1246 (3756 months), 1247-1248 (3762 months), 1249-1250 (3768 months), 1251-1252 (3774 months), 1253-1254 (3780 months), 1255-1256 (3786 months), 1257-1258 (3792 months), 1259-1260 (3798 months), 1261-1262 (3804 months), 1263-1264 (3810 months), 1265-1266 (3816 months), 1267-1268 (3822 months), 1269-1270 (3828 months), 1271-1272 (3834 months), 1273-1274 (3840 months), 1275-1276 (3846 months), 1277-1278 (3852 months), 1279-1280 (3858 months), 1281-1282 (3864 months), 1283-1284 (3870 months), 1285-1286 (3876 months), 1287-1288 (3882 months), 1289-1290 (3888 months), 1291-1292 (3894 months), 1293-1294 (3900 months), 1295-1296 (3906 months), 1297-1298 (3912 months), 1299-1300 (3918 months), 1301-1302 (3924 months), 1303-1304 (3930 months), 1305-1306 (3936 months), 1307-1308 (3942 months), 1309-1310 (3948 months), 1311-1312 (3954 months), 1313-1314 (3960 months), 1315-1316 (3966 months), 1317-1318 (3972 months), 1319-1320 (3978 months), 1321-1322 (3984 months), 1323-1324 (3990 months), 1325-1326 (3996 months), 1327-1328 (4002 months), 1329-1330 (4008 months), 1331-1332 (4014 months), 1333-1334 (4020 months), 1335-1336 (4026 months), 1337-1338 (4032 months), 1339-1340 (4038 months), 1341-1342 (4044 months), 1343-1344 (4050 months), 1345-1346 (4056 months), 1347-1348 (4062 months), 1349-1350 (4068 months), 1351-1352 (4074 months), 1353-1354 (4080 months), 1355-1356 (4086 months), 1357-1358 (4092 months), 1359-1360 (4098 months), 1361-1362 (4104 months), 1363-1364 (4110 months), 1365-1366 (4116 months), 1367-1368 (4122 months), 1369-1370 (4128 months), 1371-1372 (4134 months), 1373-1374 (4140 months), 1375-1376 (4146 months), 1377-1378 (4152 months), 1379-1380 (4158 months), 1381-1382 (4164 months), 1383-1384 (4170 months), 1385-1386 (4176 months), 1387-1388 (4182 months), 1389-1390 (4188 months), 1391-1392 (4194 months), 1393-1394 (4200 months), 1395-1396 (4206 months), 1397-1398 (4212 months), 1399-1400 (4218 months), 1401-1402 (4224 months), 1403-1404 (4230 months), 1405-1406 (4236 months), 1407-1408 (4242 months), 1409-1410 (4248 months), 1411-1412 (4254 months), 1413-1414 (4260 months), 1415-1416 (4266 months), 1417-1418 (4272 months), 1419-1420 (4278 months), 1421-1422 (4284 months), 1423-1424 (4290 months), 1425-1426 (4296 months), 1427-1428 (4302 months), 1429-1430 (4308 months), 1431-1432 (4314 months), 1433-1434 (4320 months), 1435-1436 (4326 months), 1437-1438 (4332 months), 1439-1440 (4338 months), 1441-1442 (4344 months), 1443-1444 (4350 months), 1445-1446 (4356 months), 1447-1448 (4362 months), 1449-1450 (4368 months), 1451-1452 (4374 months), 1453-1454 (4380 months), 1455-1456 (4386 months), 1457-1458 (4392 months), 1459-1460 (4398 months), 1461-1462 (4404 months), 1463-1464 (4410 months), 1465-1466 (4416 months), 1467-1468 (4422 months), 1469-1470 (4428 months), 1471-1472 (4434 months), 1473-1474 (4440 months), 1475-1476 (4446 months), 1477-1478 (4452 months), 1479-1480 (4458 months), 1481-1482 (4464 months), 1483-1484 (4470 months), 1485-1486 (4476 months), 1487-1488 (4482 months), 1489-1490 (4488 months), 1491-1492 (4494 months), 1493-1494 (4500 months), 1495-1496 (4506 months), 1497-1498 (4512 months), 1499-1500 (4518 months), 1501-1502 (4524 months), 1503-1504 (4530 months), 1505-1506 (4536 months), 1507-1508 (4542 months), 1509-1510 (4548 months), 1511-1512 (4554 months), 1513-1514 (4560 months), 1515-1516 (4566 months), 1517-1518 (4572 months), 1519-1520 (4578 months), 1521-1522 (4584 months), 1523-1524 (4590 months), 1525-1526 (4596 months), 1527-1528 (4602 months), 1529-1530 (4608 months), 1531-1532 (4614 months), 1533-1534 (4620 months), 1535-1536 (4626 months), 1537-1538 (4632 months), 1539-1540 (4638 months), 1541-1542 (4644 months), 1543-1544 (4650 months), 1545-1546 (4656 months), 1547-1548 (4662 months), 1549-1550 (466

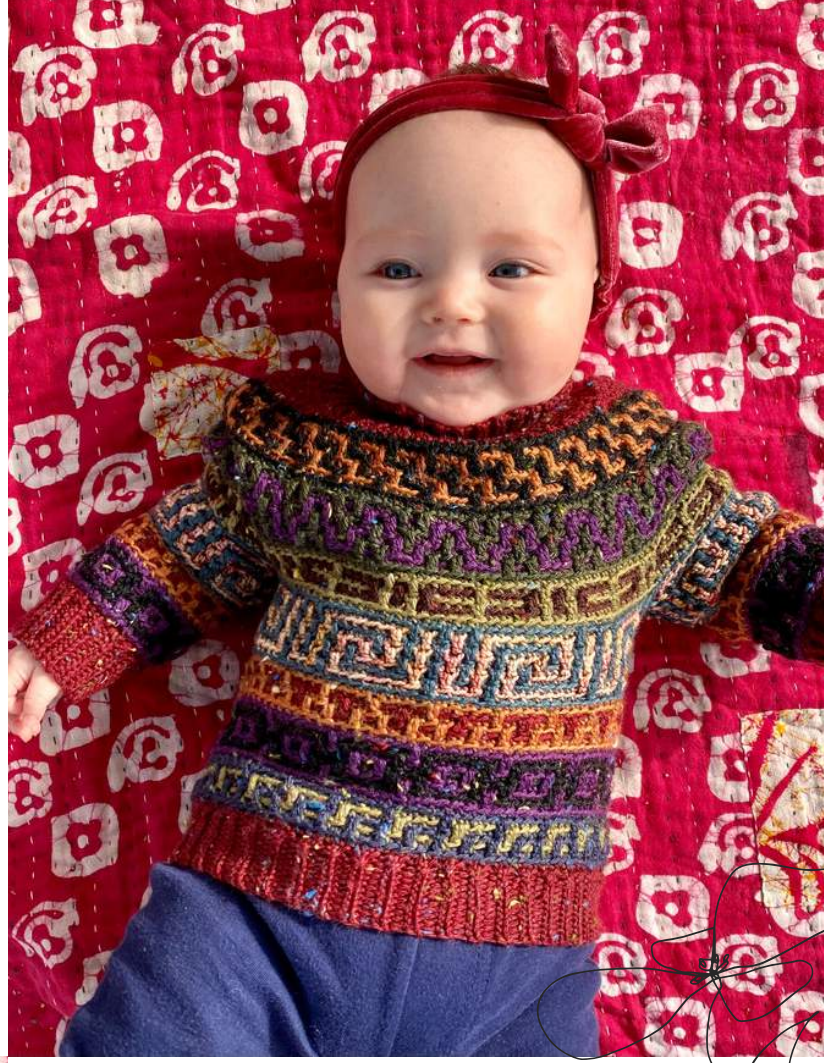


TESTERS

GIOVANNA ZOFIA

INSTA: @CROCHETQUEENING
RAVELRY: ANCLOTE3

*Size 6 - 12 mo
Knit Picks Stroll Tweed Fingering
Weight, various colorways*



MODS

None.

COMMENTS

Pick a color family, or use scraps in wild combinations— this jumper looks incredible any way you put it together!





SONJA KILPATRICK

INSTA: @HOOK.AND.CLAWS
RAVELRY: HOOKNCLAWS

Size 6 - 12 mo

*4ply cotton/some 5 ply wool (green) by
Bendigo Woollen Mills, 670m/200g own*

MODS

*made cuffs shorter than pattern approx
2cm (ch6). body I did chart 2, 6, 7 and
sleeves finished with chart 11 before
hem/cuff ribbing*

COMMENTS

*perfect to mix match colours, using
your stash and playing around with the
charts - don't necessary have to go
around in order ;*



KIRSTY CEUPPENS

INSTA: @KIRSTY CEUPPENS
RAVELRY: CAOCHAN_CRAFTS

Size 12 - 18 mo

*All 4 ply scraps from stash. Mostly wool
some alpaca and some acrylic blend*



MODS

*Did single crochet ribbed cuffs on
bottom and sleeves*

COMMENTS

*Perfectly written pattern which makes
mosaic crochet easy. Such a good
pattern for using up yarn scraps!*





SARAH BATTYE

INSTA: BATTYESARAH
RAVELRY: SARAHBATTYE

*Size 12-18 mo
all 4ply scraps- cascade yarns in purple
(cant find the exact colour
way!)malabrigo mechita in illusion,
stylecraft special in lipstick, superwash
merino (hand dyed, yellow and brozen),
fyberspates coopknits socks yeah in
ammolite, skein Queen in dodo feathers,
get knitfaced in co in industrial sunset*



MODS

none.

COMMENTS

*such a gorgeous and well written
pattern. I'd never done mosaic crochet,
and was pleasantly surprised with how
easy it is! I can't wait to make one in my
size*

ISABEL ÁLVAREZ

INSTA: LAUTRECROCHET
RAVELRY: LAUTRECROCHET

Size 2 yo

*Fingering and sport weight leftover
yarns from Rosas_crafts and Katia.
Different colors.*



MODS

*I did sleeves longer than pattern,
approx. 2cm (finishing them with the
neckline second chart).*

COMMENTS

*If you would like doing something
amazing with your leftover yarns , take
them , select a color palette that you
like, follow this pattern and... this
beauty comes out!*



AISHWARYA

INSTA: CURLYCROCHET95
RAVELRY: BYSANIAISHWARYA

Size 2 yrs

*yarnamour merchandise fingering
weight cotton, multi colour from her
mini skeins*

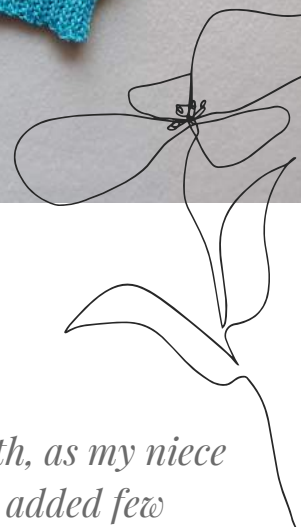


MODS

i have increased body length, as my niece is tall and she is growing, i added few extra charts, and opted for short sleeves as summer

COMMENTS

I love mosaic crochet and this jumper has been perfect learning for me. The charts are so helpful and Sandra has explained it beautifully. Now i can confidently do mosaic crochet projects I guess, hopefully next time (winter season) i can make full sleeves too.





LAURA PERACCHIO

INSTA: PROFPERACCHIO
RAVELRY: LPERACCH

Size 4 yrs

Fingering and sport weight scraps from Purl Soho, Lola Bean, and a Rainbow mini-skein set of soft sock from Julie's Yarn Boutique.

MODS

I used the same color for the contrast throughout the pattern

COMMENTS

Fun pattern that allows the maker to be creative with color. Don't let the charts intimidate you: The patterns repeat. After you look at the chart for each section, imagine what the pattern will look like in your crocheted piece. Then, you can read your work, the crocheted piece, instead of just looking at the chart.

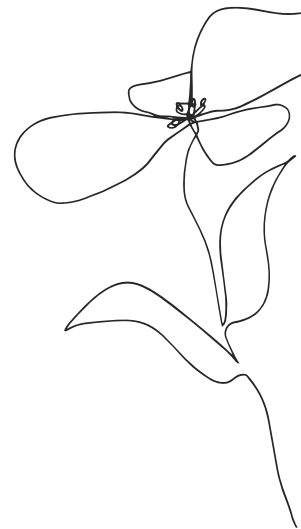




MAUD BOERAKKER

INSTA: GODSCRIMINEELTJE
RAVELRY: GODSCRIMINEELTJE

*Size 4 yo
black elephant 'blame farkes' and a
sockyarn advent mini from CreaLien
Designs*



MODS

*short sleeves (just ribbing after splitting
for the sleeves. and at Chart 1 pattern 4
I added 2 rows for more yoke depth.*

COURTNEY BATCHELDER

INSTA: THE_HAPPY_PEAPOD
RAVELRY: THEHAPPYPEAPOD

Size 6 yrs

*All wool scraps, fingering weight. All
wool scraps, fingering weight.*

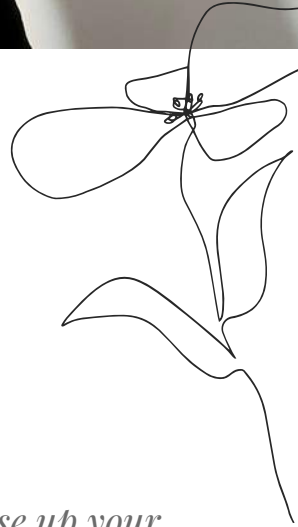


MODS

None

COMMENTS

This is a great project to use up your leftover scrap yarn and create something fun and beautiful with it! My daughter, Sunny, absolutely loves her new sweater. She has worn and skeet in it for the last 2 days! Sandra created a gorgeous design and a well thought out pattern, as usual. I highly recommend this one!



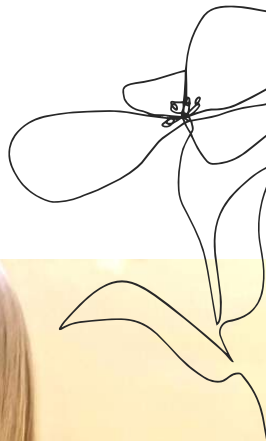


SAM WADLINGTON

INSTA: SJWADLINGTON
RAVELRY: SJWADLINGTON

Size 8 yo

*Fingering minis and scraps from
Solstice Fiber Studio, Sewrella Yarn,
Emma's Yarn and Cosy Posy Yarn Co.*



MODS

i did 3/4 length sleeves

COMMENTS

Super fun pattern that never gets boring! It is so fun to watch each mosaic section take shape and is easier than it looks. I can't wait to make one for myself!

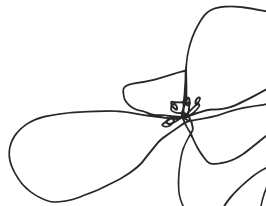




CECILIA GONZÁLEZ

INSTA: @MIMICHITEJIDOS
RAVELRY: CECIML

*Size 10 yo
Nevada by Lho (mix of merino wool
and acrylic)*



MODS

I used copper to create contrast in all the rounds throughout the design.

COMMENTS

It's entertaining and comfy. It's the perfect project to use all your leftover yarn you have and to play with colours and your imagination. The charts are very clear and the videos are really helpful to learn the technique.



ESRAA RIYAD

INSTA: @ESRAARIYAD.DESIGNS
RAVELRY: ESRAARIYAD

Size 12 yrs

Alize Cotton Gold (#2 Sport weight).

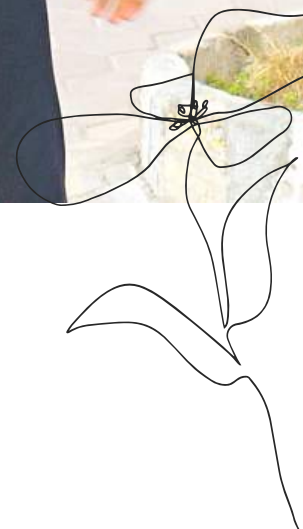


MODS

None

COMMENTS

You will never imagine how easy the mosaic crochet is until you try it, go with the flow/ the chart ;) and you will find a wonderfully artistic design in the end only consisting of sc & dc. The suggested sizes in the pattern are very accurate, follow your child's measurements, not the age, and you will find the sizes are very accurate and perfectly fit.



OLIVIA LACASSE

INSTA: @PRETTYARNCUTE
RAVELRY: PRETTYARNCUTE

Size 14 yrs

Berroco Comfort DK - Color 2753 (blue); Berroco Comfort DK - Color 2733 (teal); Premier Serenity Pink Sugar; Berroco Comfort DK - color 2740 (lime green); Patons Kroy Sock FX; Yarn Bee Soft & Sleek DK - blue.



MODS

Per teenager's request, I made this as a crop top. The body is essentially 2 inches shorter than the pattern specifies.

COMMENTS

The details in this pattern are unmatched - and surprisingly easy. As a newbie to mosaic crochet, Sandra's pattern and corresponding tutorials made it simple to create a stunning garment that feels like a piece of artwork. I will absolutely be making one for myself as well.