

LOOKBOOK
VESUVIUS TEE



NOMAD
STITCHES

Vesuvius is the sister pattern to the Etna Tee. A collection inspired by beautiful Italian landscapes and the roughness of terrain around the volcanic majesties that their namesakes are. Vesuvius is made top-down with a drop-shoulder construction and has perfectly fitted shoulders to eliminate excess fabric around the underarms. The Tee features a textured and airy stitch, which is perfect for summer garments, a wide over-sized fit and a split high-low hem; all finished with an elegant edging. Best part? Vesuvius is truly size inclusive with a design that ensures that the shoulder drops roughly in the same spot on all makers, regardless of their size. The details in this Tee will have you reaching for it time and time again!

#VesuviusTee



SAMPLE INFORMATION

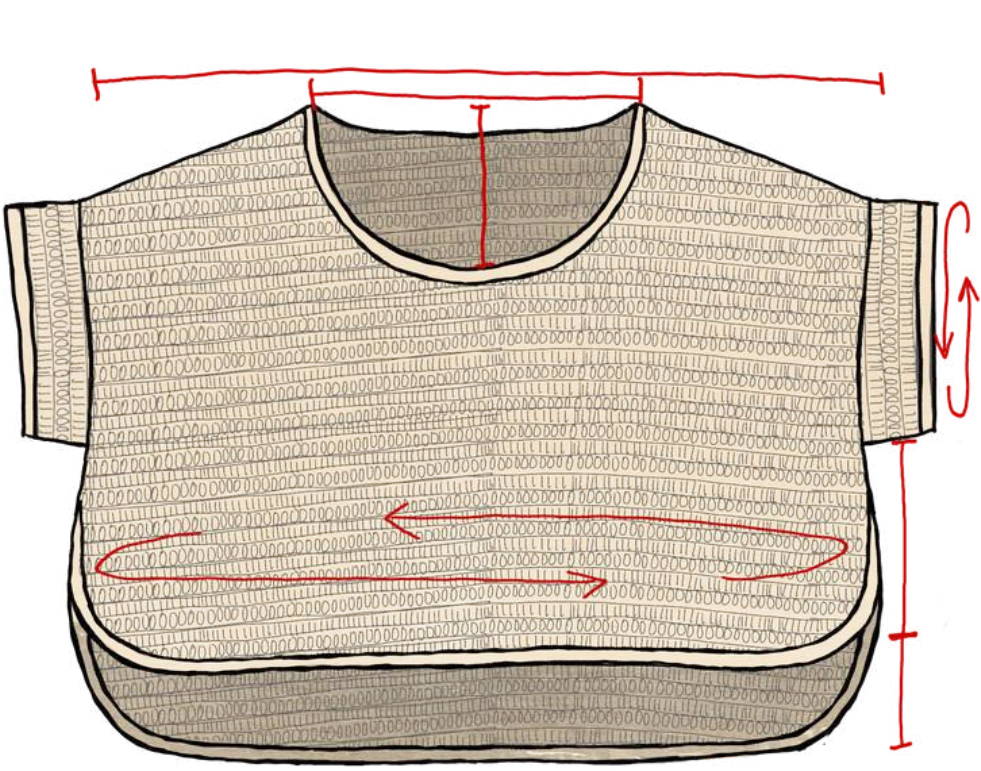
*Sample is size 4. Model measures
~100 cm/39.25 in at bust.*

*Sample used Pascuali, Suave (100%
Organic Cotton, 25g, 162 m / 177 yds)
in color Cream (50)*



YARDAGE REQUIREMENTS

YARN: Fingering weight yarn (size 1)
 Approx 850 (950, 1065, 1155, 1265) (1385, 1455, 1605, 1715) m
 / 930 (1045, 1165, 1265, 1385) (1515, 1590, 1755, 1875) yds for
 a cropped high-low hem as sample.
 Approx 6 (6, 7, 8, 8) (9, 9, 10, 11) balls of Pascuali, Suave.
 Yardage provided includes 5% extra for swatching and
 margin of error. Adjust amounts for desired length.



SIZES+MEASUREMENTS

THE FOLLOWING ARE THE FINISHED GARMENT MEASUREMENTS PER SIZE: 1 (2, 3, 4, 5) (6, 7, 8, 9, 10)

- Bust: 93.5 (102.5, 113.5, 121, 130) (141, 150, 161, 170) cm / 37 (40½, 44¾, 47½, 51¼) (55½, 59, 63½, 67) in
- Shoulder Width: 50.5 (55, 56.5, 60.5, 64) (66, 66, 67.5, 70.5) cm / 20 (21¾, 22½, 23¾, 25¼) (26, 26, 26¾, 27¾) in
- Neck Width: 23 (22.5, 24, 25, 26) (27.5, 27.5, 27, 27) cm / 9¼ (8¾, 9½, 9¾, 10¼) (11, 11, 10½, 10½) in
- Neck Depth: 13 (13, 14.5, 14.5, 14.5) (14.5, 14.5, 15.5, 15.5) cm / 5 (5, 5½, 5½, 5½) (5½, 5½, 6¼, 6¼) in
- Sleeve Circumference: 38 (38, 41, 42, 44.5) (48, 52.5, 57.5, 61) cm / 15 (15, 16, 16½, 17½) (19, 20¾, 22¾, 24) in
- Front Body Length from underarm²: 20.5 (18.5, 17.5, 18.5, 17.5) (15, 14, 12.5, 11) cm / 8 (7¼, 7, 7¼, 7) (6, 5½, 5, 4¼) in
- Back Body Length from underarm²: 23.5 (21.5, 20.5, 21.5, 20.5) (18, 16.5, 15.5, 14) cm / 9¼ (8½, 8, 8½, 8) (7¼, 6½, 6, 5½) in

¹To be worn with 13 - 22 cm / 5 - 8½ in of positive ease around bust
²Adjustable to taste.



ALTERNATIVE YARNS

Any fingering or light sport weight yarn will work, but here are some I recommend based on weight and composition:

DMC Natura, Just Cotton (100% Cotton)

Scheepjes, Bamboo Soft (50% Bamboo, 50% Cotton)

MillaMia, Naturally Baby Soft (50% Cotton, 50% Soy Viscose)

KnitPicks, Lindy Chain (70% Linen, 30% Pima Cotton)

KnitPicks, Comfy Fingering (75% Pima Cotton, 25% Acrylic)


KnitPicks, Samia (80% Cupro, 20% Mulberry Silk)

Lion Brand, Viscose Wrap Cone Yarn (100% Viscose)

PATTERN OVERVIEW

VESUVIUS TEE

By Sandra Gutierrez



ABOUT

ABOUT

ABBREVIATIONS (US)

SPECIAL TECHNIQUES

ABOUT

ABOUT

ABBREVIATIONS (US)

SPECIAL TECHNIQUES

ABBREVIATIONS (US)

ABBREVIATIONS (US)

SPECIAL TECHNIQUES

SPECIAL TECHNIQUES

SPECIAL TECHNIQUES

PATTERN NOTES

PATTERN NOTES

THE PATTERN

THE PATTERN

FRONT

FRONT

BACK

BACK

NECKLINE

NECKLINE

ARMHOLE

ARMHOLE

ARMHOLE

ARMHOLE

ARMHOLE

ARMHOLE

BODY

BODY

ARMHOLE

ARMHOLE

ARMHOLE

ARMHOLE

ARMHOLE

ARMHOLE

FROM THE DESIGNER

FROM THE DESIGNER



TESTERS

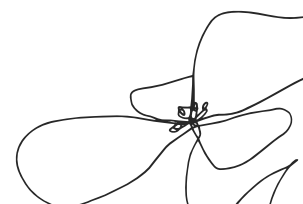




BEATRIZ CÁNOVAS

INSTA: @MISSBEETLE_
RAVELRY: MISSBEETLE13

Size 2
Caricia Aurea (Colour 107)



MODS

I started the split on the front after just 1 row pair; and started the split on the back after 2 row pairs.

COMMENTS

The construction is really clever, with easy to follow- and enjoyable!- instructions. The shaping in the shoulder and slip hem look absolutely great when wearing the tee. They make this garment a must in every crocheter's wardrobe.





BRIANNE JAQUETTE

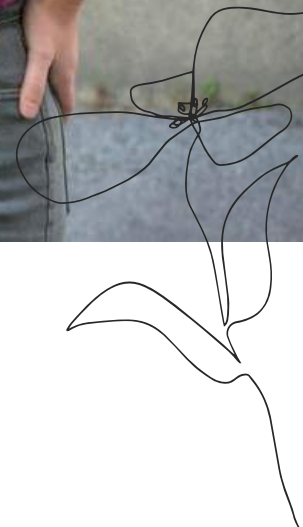
INSTA:

@CERULEANCROCHET

RAVELRY: BJAQUETTE

Size 2

Main color: Drops Safran, color 15 (dark pink); Sleeves and Borders: Sandnes Garn Mandarin Petit, color 5844 (periwinkle).



MODS

I made the pattern as written, except I used a contrasting color for the sleeves and borders.

COMMENTS

The construction is so unique, yet simple enough to do if you follow Sandra's instructions. The split hem and details on the border really elevate the whole look!



LUCIA

INSTA: @CROCHETWITHLU

RAVELRY: CROCHETWITHLU

Size 3

Knitting for Olive - Cotton Merino

*Colour: Terracotta Rose 250 metres /
50 grams*



MODS

Started hem split at 7cm (5 row pairs) from underarm. 4 row pairs on front before rounded corners. 5 row pairs on back before rounded corners.

COMMENTS

This tee is perfect from the shoulder shaping, oversized fit, high-low hem and faux i-cord ribbing. This is a wonderful tee!

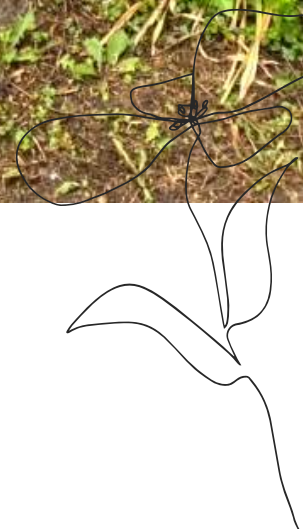


KELLY JAMES

INSTA: @KMENDLAR
RAVELRY: MMENDLAR

Size 5

Plymouth yarn nettle grove



MODS

One extra inch on the body than what was called for in the pattern four row pairs on the front split, five row pairs on the back split

COMMENTS

Great everyday tee with so many unique details, I'm going to need several of these

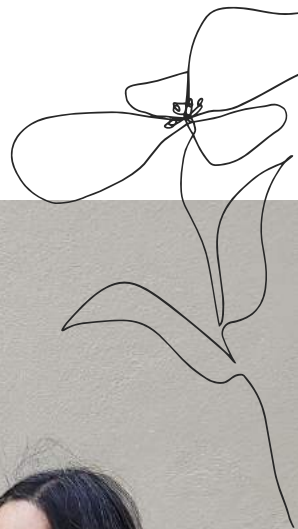




PAULA SANTANA

INSTA: @LANAYPUNTO
RAVELRY: LANAYPUNTO

Size 6
Balá de @lanasnaturales



MODS

started hem split at 24 cm

COMMENTS

I loved the details of construction, the stitch and the rounded corners





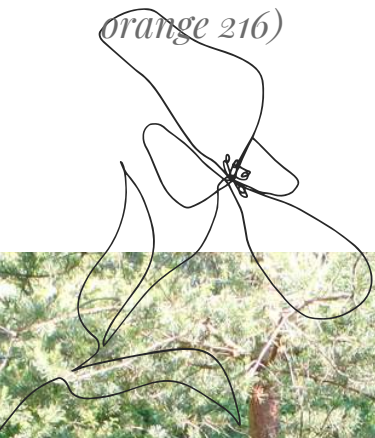
KÜLLI SAARNIIT

INSTA: KYLLI_S

RAVELRY: KYLLI5

Size 4

*ONLine Linie 164 Java (linen 71 and
orange 216)*



MODS

*Made body longer - 12 pairs altogether.
Worked only 2 pairs on Front Hem. No
other modifications.*

COMMENTS

*I loved the stitch pattern and the overall
construction of the tee, especially the
shoulder part and the i-cord ribbing.*





MÉLINE

INSTA:

@BORIES_CREATIONS

RAVELRY: BORIES

Size 1

DMC Natura Just Coton : Safran - N° 47 and leftovers of Kemke Reborn Denim Uni (148 - Pink) alternated with Katia Fair Coton (Pink - 33) for the sleeves and neckline.



MODS

I followed the pattern without adding rows. Started the hem split at 13cm.

COMMENTS

I find the stitches very pretty and the construction original. I particularly love the drop sleeves and the oversized look. If I had to do it again, I'd do fewer rows for the body and more rows after the split for a more "dramatic" slit. I would also use a 0.5mm wider hook (as recommended in the pattern) so that the bottom edge is less tight.

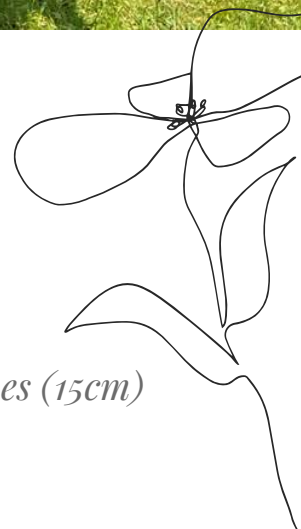




JULIA BARNWELL

INSTA: @CROCHETBYJOOLES
RAVELRY: JOOLES1111

*Size 1
Hobbii Twister (plus a little bit of Scheepjes
Twirl Solid)*



MODS

*Started side split at 6 inches (15cm)
from underarm*

COMMENTS

This is a great pattern with very clever construction from the shoulder shaping to the split hem, rounded corners and oversized fit. I love it and will be making it again.



CARRIE TOWNSEND

INSTA:

@CARRIETOWNSEND72

RAVELRY: CARRIEAT72

Size 5

Drops Safran (off white, light ice blue, coffee, pistachio, mustard, denim blue, beige, sea green and lemon)



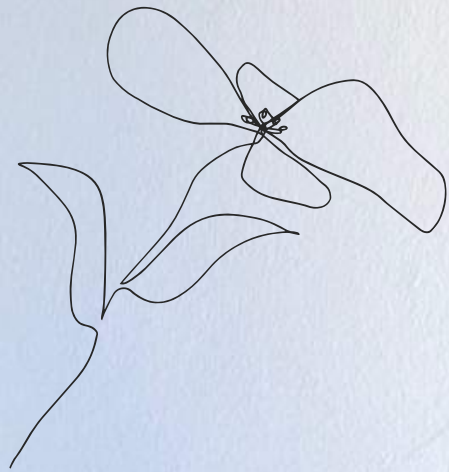
MODS

Worked 10 pairs before split. Alternated starting point for each colour to "hide" the seam.

COMMENTS

The design of this pattern is so unique and interesting and an absolute joy to make. I love the oversized nature of it (even though mine is a little more oversized than it should be for my size due to my gauge being slightly off). And that trim, so simple yet so effective.





ANDREA VU

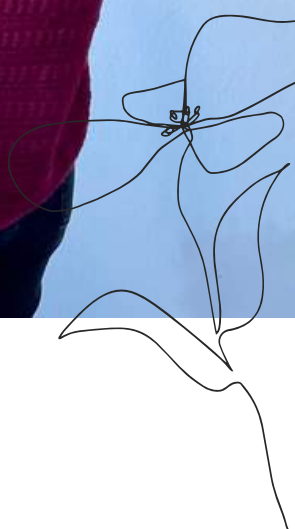
INSTA:

@NDRAINWOOLDELAND

RAVELRY: NDRAINWOOLDELAND

Size 1

Scheepjes Bamboo Soft in Deep Cherry



MODS

I made without any modification. I followed exactly the pattern

COMMENTS

The construction is unique and seamless. I also love the neat finished edging with faux cord, which made this tee look very professional.



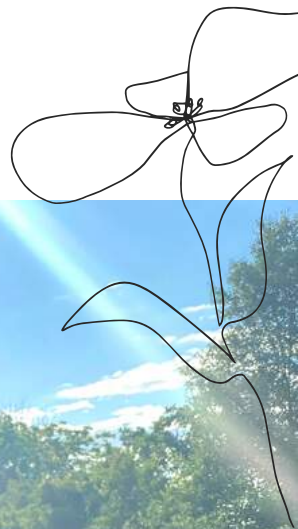


MICHELLE NOTARIANNI

INSTA: MISHUKNITS
RAVELRY: MISHU09

Size 2

*Lion Brand LB Collection Cotton Bamboo
Linen + Sunflower*



MODS

Started Hem Split at 11 cm from underarm. Worked 4 row pairs on Front Hem and 5 row pairs on Back Hem before Rounded Corners.

COMMENTS

Construction was so unique and I love the split hem! Since every row stitch is different from the last, it made crocheting the tee engaging.





EMILIE

INSTA:

@EMILIAMAKESANDCREATES

RAVELRY: EMMAKESANDCREATES

Size 4

Juniper Moon Farm - Findley (Color Dove)



MODS

Started the hem split at 8.5 inches for a longer body. Worked the same number of row pairs on the front and back hems before starting the rounded corners for a less dramatic high/low

COMMENTS

I am absolutely obsessed with the look of the faux i-cord and now want it on all my projects. The construction is different from other top-down tees I've made and makes for perfect shaping throughout. This top is also absolutely perfect for either dressing up or down, depending on the occasion.





HOLLYANN MENDLAR

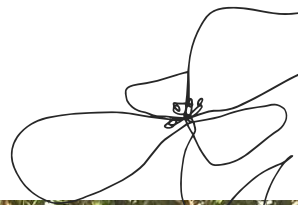
INSTA:

@MENDLARHOLLYANN

RAVELRY: HMENDLAR

Size 3

Secret Treasures Cotton Cakes



MODS

One extra inch on the body, four row pairs on the front split, five row pairs on the back split, and I added a pocket

COMMENTS

This is such a fun pattern to crochet! Since the body is made in one piece there is no annoying seaming! The faux I-cord ribbing adds a nice finishing all the way around, and I love the rounded corners!





MADERIA

INSTA:

@ADVENTURESINFIBER

RAVELRY: MADERIAANN

Size 3

*knitting for olive/cotton Merino in the
Purple Elephant colorway*



MODS

I started the split after 5 row pairs and then did 4 row pairs before the corners in the front and 5 in the back. I also went up 2 hook sizes for the faux i-cord edging.

COMMENTS

I love the split hem detail and you can modify it to give it different looks! also love the shoulder shaping detail!

